

## Quick Installation Guide Hitachi Travelstar 5K500 & Travelstar E5K500

Models: HTS545050KTA300  
HTS545040KTA300  
HTS545050KTSA01  
HTS545040KTSA01  
HTE545050KTA300  
HTE545040KTA300

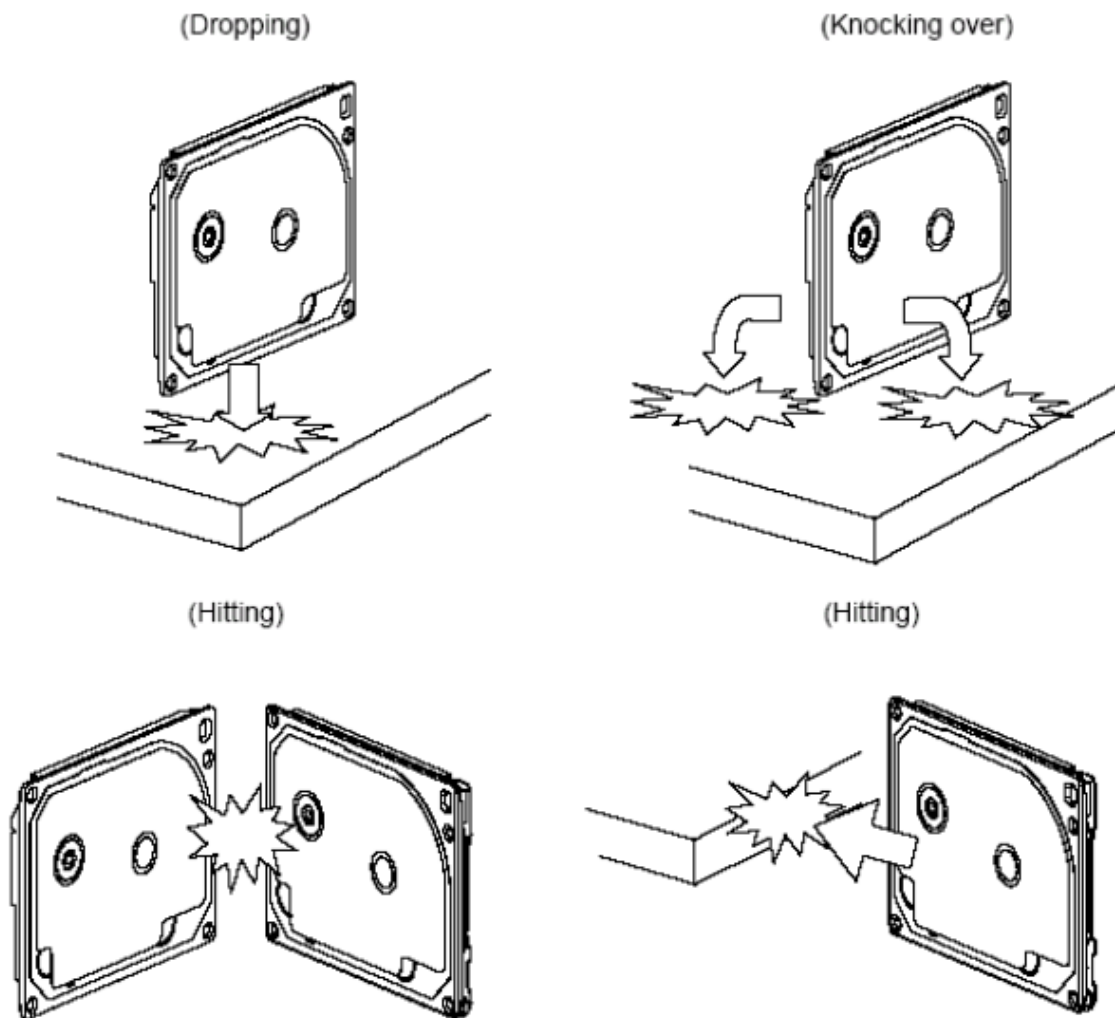


---

## Handling precautions

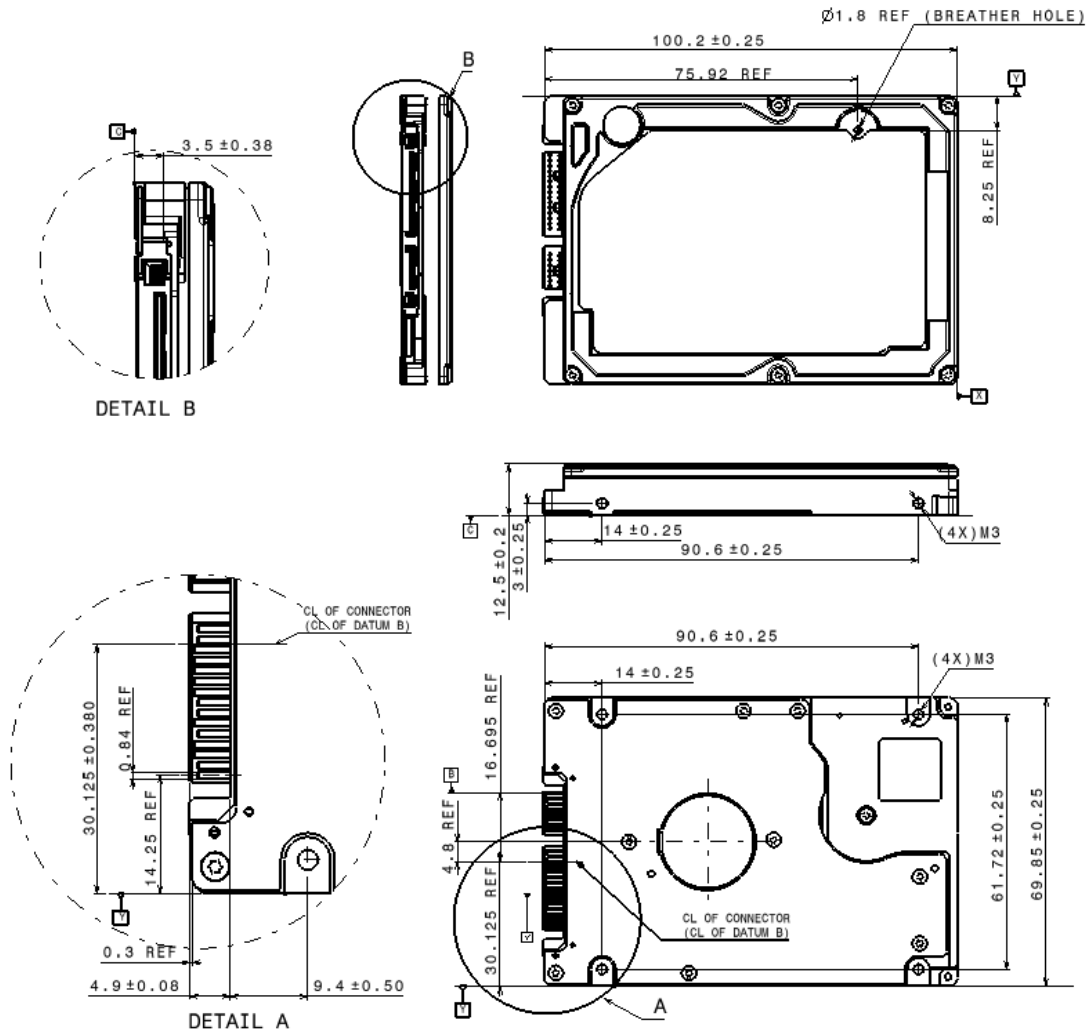
---

- Set the drive down gently to prevent damage from impact or vibration.
- Handle the drive carefully by the edges. Do not touch the exposed printed circuit board or any electronic components.
- Do not press on the top or bottom of the drive.
- Before handling the drive, discharge any static electricity from yourself and your clothing. With one hand touch an unpainted metal surface, then touch the ESD bag with the other hand. Remain in contact with the chassis and the bag for a minimum of two seconds.
- Vibration, shock and static electricity to the drive will damage the precision parts. In particular, prevent vibration or shock generated by dropping, knocking over or hitting the drive. Also, avoid touching the electrical components directly, which can discharge electrostatic energy and damage the drive.



Mounting Recommendations

The mounting hole locations and size of the drive are shown below:



The drive will operate in all axes (six directions) and will stay within the specified error rates when tilted  $\pm 5$  degrees from these positions. Performance and error rate will stay within specification limits if the drive is operated in the other permissible orientations from which it was formatted. Thus a drive formatted in a horizontal orientation will be able to run vertically and vice versa.

The recommended mounting screw torque is  $0.3 \pm 0.05$  Nm.

The recommended mounting screw depth is  $3.0 \pm 0.3$  mm for bottom and  $3.5 \pm 0.5$  mm for horizontal mounting.

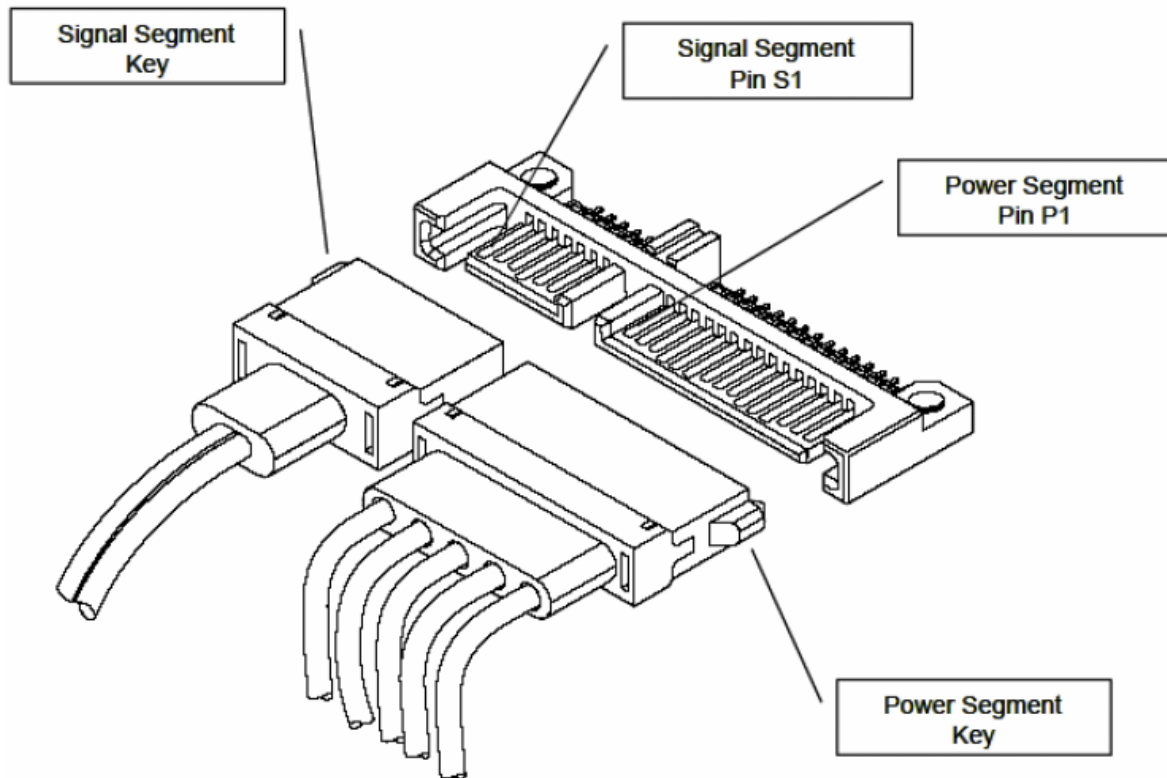
The user is responsible for using the appropriate screws or equivalent mounting hardware to mount the drive securely enough to prevent excessive motion or vibration of the drive at seek operation or spindle rotation.

---

Interface connector

---

The figure below shows the physical pin location



- All pins are in a single row, with a 127 mm (0.050”) pitch.
- All V5 pins must be terminated.
- The mating sequence for the case of back-plane blind-mate connector is referred to OEM Spec.

---

© Hitachi Global Storage Technologies

Hitachi Global Storage Technologies

Produced in the United States

1/08

Hitachi Global Storage Technologies' trademarks are authorized for use in countries and jurisdictions in which Hitachi Global Storage Technologies has the right to use, market and advertise the brands. The Travelstar trademark is authorized for use in the Americas, EMEA, and the following Asia-Pacific countries and jurisdictions: Australia, Hong Kong, Japan, New Zealand, South Korea and Taiwan. Contact Hitachi Global Storage Technologies for further information. Hitachi Global Storage Technologies shall not be liable to third parties for unauthorized use of Hitachi Global Storage Technologies trademarks.

References in this publication to Hitachi Global Storage Technologies' products, programs, or services do not imply that Hitachi Global Storage Technologies intends to make these available in all countries in which it operates.

Product specifications provided are sample specifications and do not constitute a warranty. Information is true as of the date of publication and is subject to change. Actual specifications for unique part numbers may vary. Please visit the Support section of our website, [www.hitachigst.com/support](http://www.hitachigst.com/support), for additional information on product specifications.

Photographs may show design models.

03 January 2008

---